

TiD Rollover Meter Procedure

1. CONLOG – all CONLOG type meter (all models function the same)

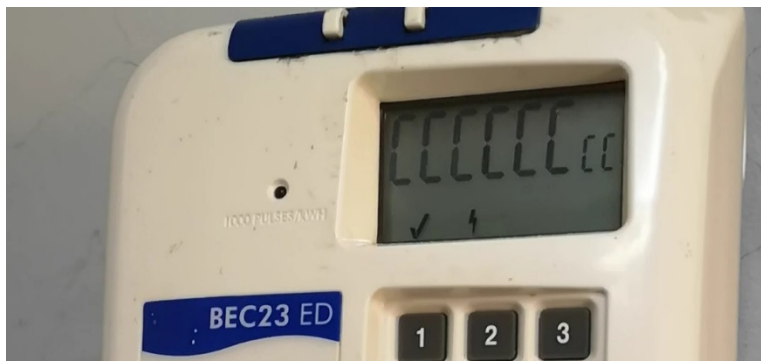
Coding token (Key Change)



1. Punch in first set of 20 digits “coding token” – the meter will flash (5 sec) , continue to next step



2. Punch in second set of 20 Digits “coding token” - (meter will flash)



3. Punch in third set of 20 Digits (this should be your units and meter should flash amount purchased)

2. Taurus _ SOFT BUTTON

Coding Token (key Change)



Punch in the first 20 digit token “coding token” and press ENTER,
wait 2 second and proceed to step 2



Punch in the Second 20 digit token “coding token” and press ENTER



2. Taurus _ HARD BUTTON

Coding Token (key Change)



Punch in the first 20 digit token “coding token” and press ENTER,
wait 2 second and proceed to step 2



Punch in the Second 20 digit token “coding token” and press ENTER

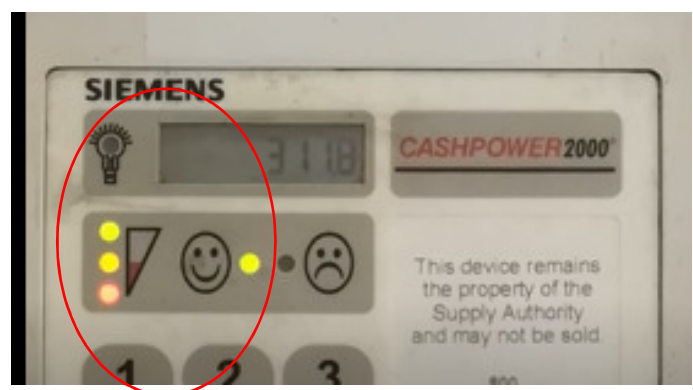
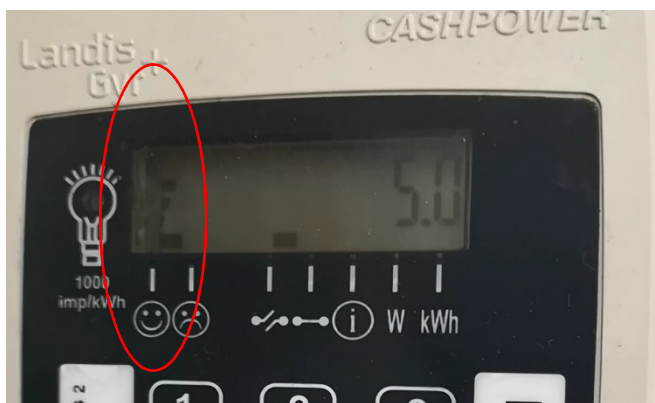


3. Landis + Gyr & Siemens Cash Power

Coding Token (key Change)



Punch in the first 20-digit token "coding token" (meter will flash (scroll) in left hand corner of the screen above the smiling face)



Punch in the Second 20-digit token "coding token" (meter will flash (scroll) in left hand corner of the screen above the smiling face) (meter will display 2.2 in right hand corner)

